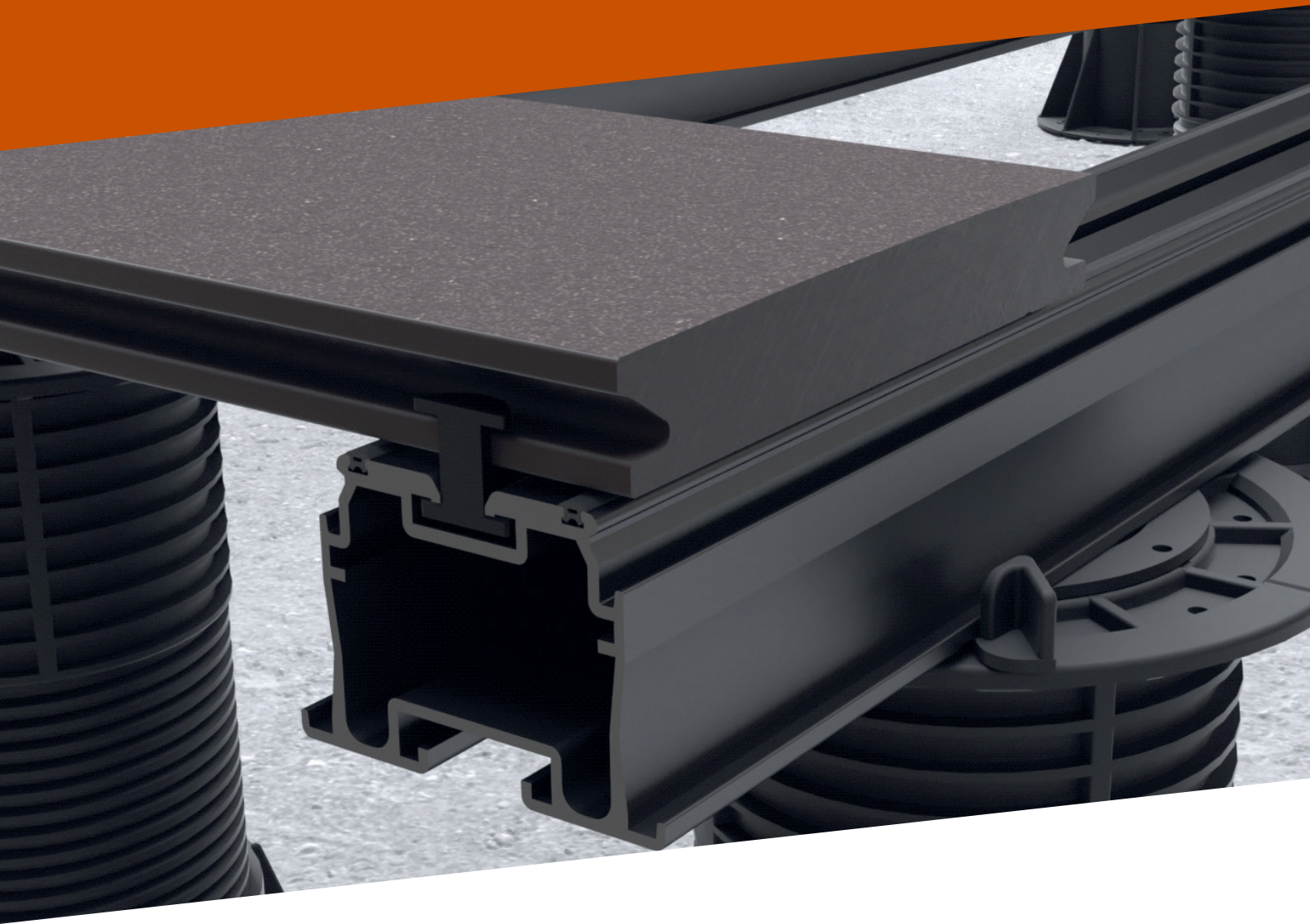


# Installation Guide

Reference: IG-TCP-1021

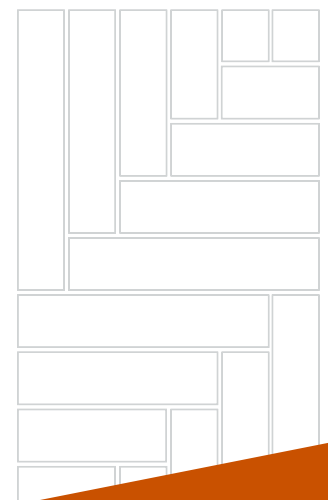


## Terrafina Composite Decking

Installed using Raaft Joists on Adjustable Pedestals.

### Tools Required

- ✓ Hand saw/circular saw
- ✓ Drill/impact driver
- ✓ Phillips head drill bit
- ✓ Level
- ✓ Tape measure
- ✓ String line
- ✓ Allen key (for access clips)
- ✓ Long spirit-level
- ✓ rubber mallet



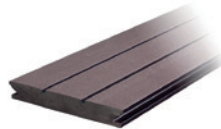
# Installation Guide

Terrafina Composite Decking - Installed using Raaft Joists on Adjustable Pedestals.  
Reference: IG-TCP-1021

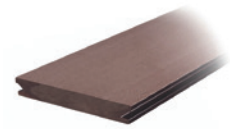
## System components

### Decking Boards

Yacht Deck Board



Plain Deck Board



### Decking Board Accessories

Starter Clip



Installation Clip



Access Clip



Universal connector



80 mm Aluminium edge profile



60 mm Aluminium edge profile



WPC edge profile



Joint profile



### Raaft Aluminium Joists

30 mm height



50 mm height



### Joist Accessories

(for 50 mm height joists)

90° degree connection clip



Angular connection clip and plug



Straight connection plug



Blanking cap for 50 mm rail



### Adjustable Pedestals

Adjustable pedestal  
Height range  
12 mm - 74 mm



Adjustable pedestal  
Height range  
37 mm - 1016 mm



### Accessories

CT1 Power Grab'n'bond



Cleaning Kit



WANT MORE HELP?

Contact our technical support team on +44 (0)20 3146 7879  
or email [technical@raaft.co](mailto:technical@raaft.co)

# Installation Guide

Terrafina Composite Decking - Installed using Raaft Joists on Adjustable Pedestals.  
Reference: IG-TCP-1021

## General information

### Important information

Terrafina can be cut, milled and drilled using standard woodwork tools.

Due to its wood content Terrafina is subject to natural expansion. As a consequence, **sufficient expansion joints, a gradient of 1-2% along the length of the board and ventilation under the deck construction are compulsory.** Defective installation may cause the material to warp. Therefore, voids between the sub profiles must not be filled in and permanent waterlogging in the hollows and under the boards must be avoided.

### Storage

Until the point of installation, the deck boards and sub-structure profiles should be stored fully packed, fully supported along their length and in a dry environment. Condensed water due to humidity must not penetrate into the packaging. If moisture penetrates due to damaged packaging, the wrapping should be removed completely and sufficient drying and ventilation of the profiles should be allowed. Improper storage may lead to irreversible deformation. Keep boards covered when storing for any period of time to avoid uneven discolouration from sunlight

### Index

- 1.0 Ground suitability and preparation . . . . .
- 2.0 Setting out pedestals . . . . .
- 3.0 Installing sub-structure joists . . . . .
- 4.0 Installation of deck boards . . . . .
- 5.0 Installing deck board accessories . . . . .
- 6.0 Removing a board with access clips . . . . .
- 7.0 Cleaning and care . . . . .
- 8.0 Further information . . . . .



**WANT MORE HELP?**  
Contact our technical support team on +44 (0)20 3146 7879  
or email [technical@raaft.co](mailto:technical@raaft.co)

# Installation Guide

Terrafina Composite Decking - Installed using Raaft Joists on Adjustable Pedestals.  
Reference: IG-TCP-1021

## 1.0 Ground and sub-base suitability

### 1.1 Ground and sub-base suitability

The ground must be stable and properly compacted. If the ground is not sufficiently stable, this may lead to instability and potential damages to the construction and persons or property thereon.

### 1.2 Acceptable foundations

- Crushed stone - 500 mm minimum thickness
- Former patio surfaces such as; paving, concrete, bitumen
- PVC, timber or metal sheet constructions

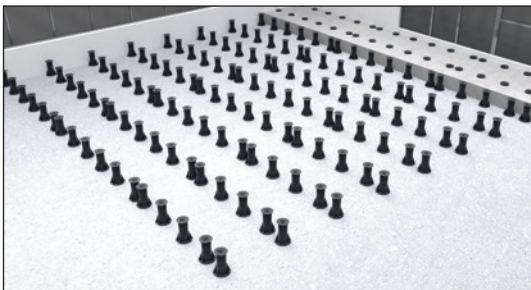
### 1.3 Permissible point load/area load

The distances between the sub-structure profiles described herein are designed for point loads of up to 300kgs and area loads of up to 1000kg/m<sup>2</sup>. If these values are exceeded or if the bearing capacity is lower, the distances may have to be reduced where required. Misapplication may lead to damage to property or person. Please consult with an authorized stress analyst before starting the assembly.

### 1.4 Clean and sweep area



## 2. Setting out pedestals



WANT MORE HELP?

Contact our technical support team on +44 (0)20 3146 7879  
or email [technical@raaft.co](mailto:technical@raaft.co)



# Installation Guide

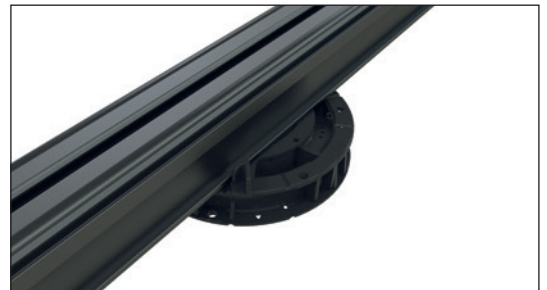
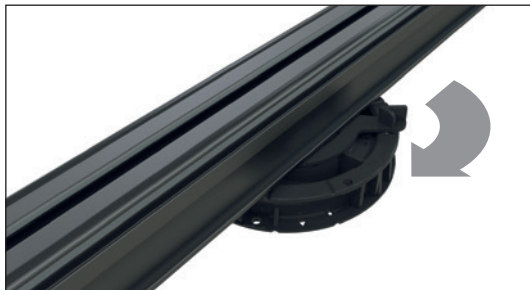
Terrafina Composite Decking - Installed using Raaft Joists on Adjustable Pedestals.  
Reference: IG-TCP-1021

## 2.1 Clip in joist connector.

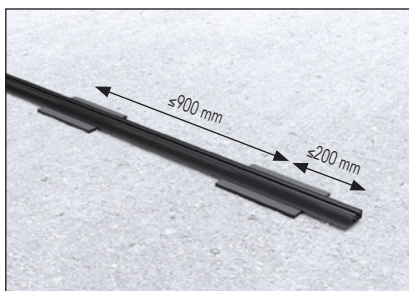


## 3.0 Installing sub-structure joists

### 3.1 Twist connector clockwise to lock joist onto pedestal



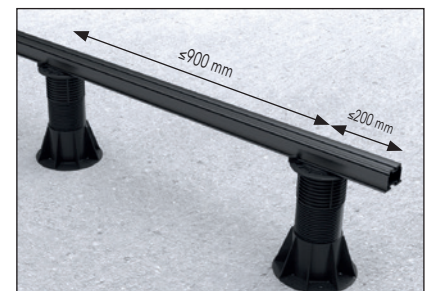
### 3.2 Maximum distances between support



17 mm Raaft Aluminium Joist



30 mm Raaft Aluminium Joist



50 mm Raaft Aluminium Joist



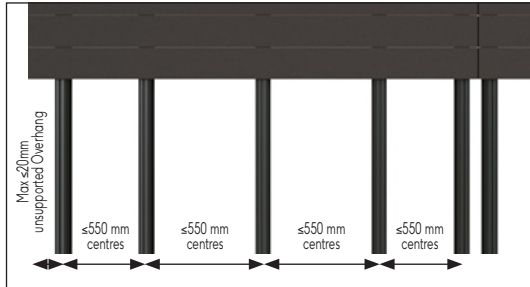
WANT MORE HELP?

Contact our technical support team on +44 (0)20 3146 7879  
or email [technical@raaft.co](mailto:technical@raaft.co)

# Installation Guide

Terrafina Composite Decking - Installed using Raaft Joists on Adjustable Pedestals.  
Reference: IG-TCP-1021

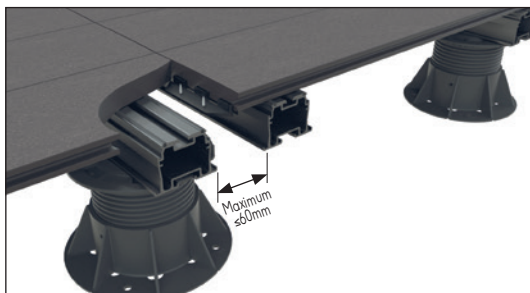
## 3.3 Maximum distances between support



Note: For boards laid at an angle of 30° to 150° -  
Maximum distance between centres 350mm

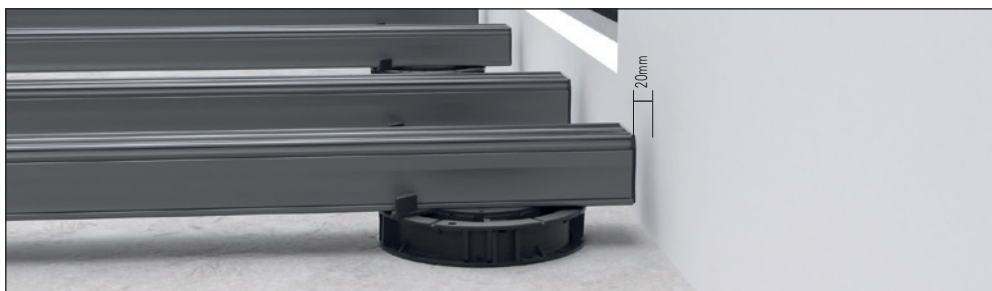
## Installation of sub-structure profiles in case of abutting deck boards.

IMPORTANT: Must have a double rail where two boards meet



## 3.4 Distances to existing parts of the building, garden wall etc.

Movements due to linear expansion on the effects of temperature and moisture must be allowed.  
We recommend an allowance of 3mm per linear metre.



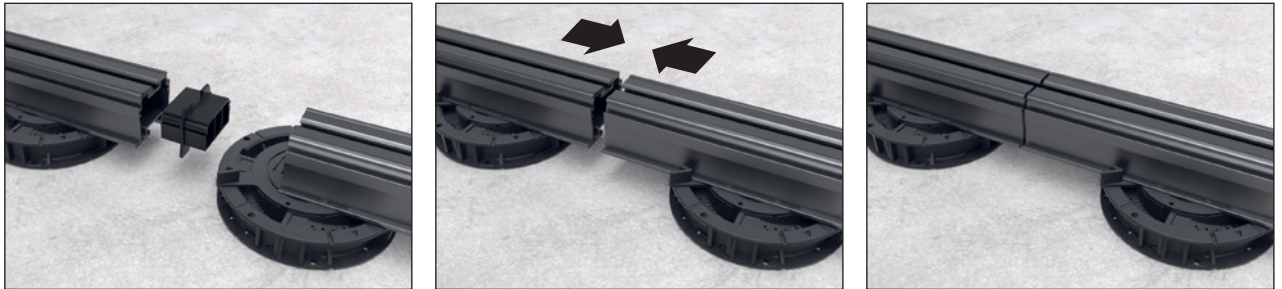
**WANT MORE HELP?**  
Contact our technical support team on +44 (0)20 3146 7879  
or email [technical@raaft.co](mailto:technical@raaft.co)

# Installation Guide

Terrafina Composite Decking - Installed using Raaft Joists on Adjustable Pedestals.  
Reference: IG-TCP-1021

## 3.5 Abutting sub-structure profiles should be connected.

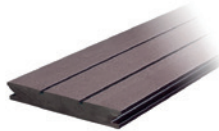
These accessories are not suitable for 17mm and 30mm joists.



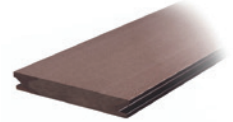
## 3.6 Level Joists



We recommend to install the Yacht Deck boards with a slight slope of 1°.

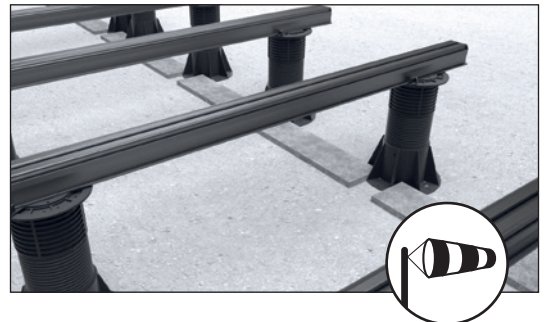
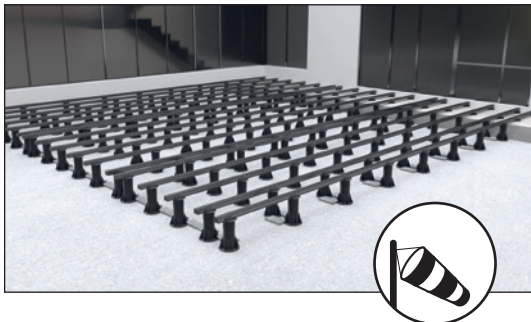


Plain Deck boards can be laid without a slope



## 3.7 Wind loads

It may be necessary to provide concrete slabs all around the perimeter pedestals.



**WANT MORE HELP?**  
Contact our technical support team on +44 (0)20 3146 7879  
or email [technical@raaft.co](mailto:technical@raaft.co)

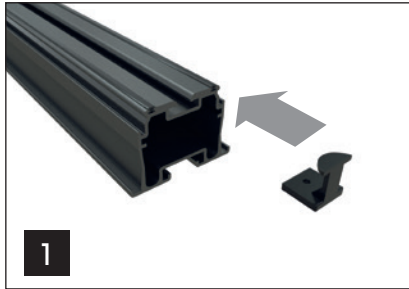


# Installation Guide

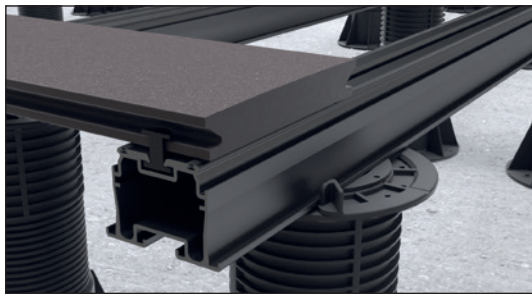
Terrafina Composite Decking - Installed using Raaft Joists on Adjustable Pedestals.  
Reference: IG-TCP-1021

## 4.0 Installation of deck boards

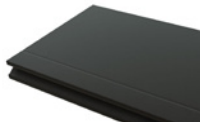
### 4.1 Position and install starter clips



### 4.2 Lay first deck board

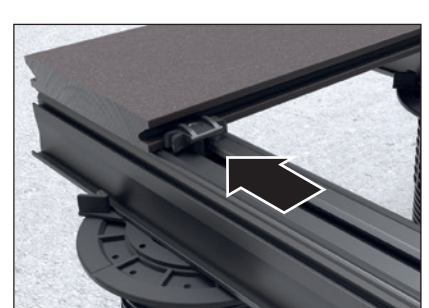
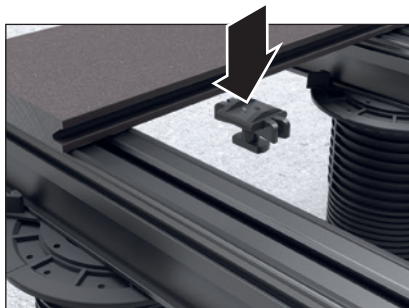


The boards have a line along the back to identify which way round the boards should be fitted so grain runs in the same direction.



### 4.3 Inserting mounting clips

Insert the installation clips into the sub profile. Turn and push along the lower deck board edge. Clip may need to be tapped with a rubber mallet to secure firmly against the board



**WANT MORE HELP?**  
Contact our technical support team on +44 (0)20 3146 7879  
or email [technical@raaft.co](mailto:technical@raaft.co)

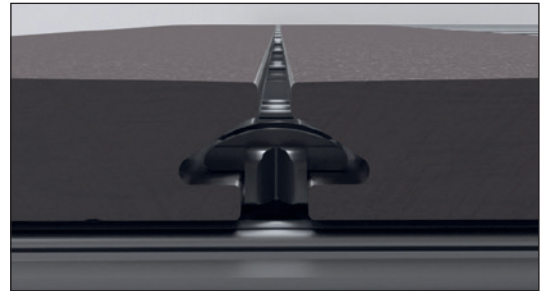
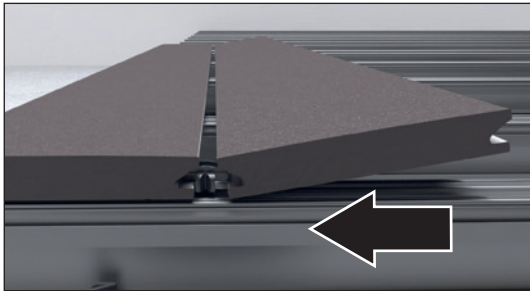


# Installation Guide

Terrafina Composite Decking - Installed using Raaft Joists on Adjustable Pedestals.  
Reference: IG-TCP-1021

## 4.4 Lay following deck boards

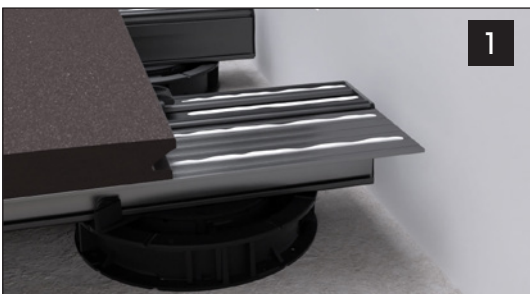
Apply the following deck boards in the same direction and an angle of approx. 15° to the installation clip and push up against the clip head. Then lower the board down and repeat across the decking area.



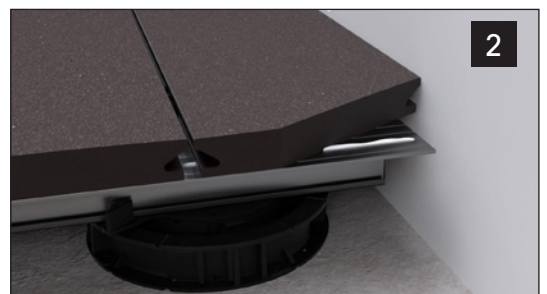
## 4.5 Optional joint profile between joints, when installing boards



## 4.6 Mounting the last deck board (entire deck board)



Screw last clip



Use adhesive to fix down last board



WANT MORE HELP?  
Contact our technical support team on +44 (0)20 3146 7879  
or email [technical@raaft.co](mailto:technical@raaft.co)

# Installation Guide

Terrafina Composite Decking - Installed using Raaft Joists on Adjustable Pedestals.  
Reference: IG-TCP-1021

## 4.7 Mounting the last deck board (half board)

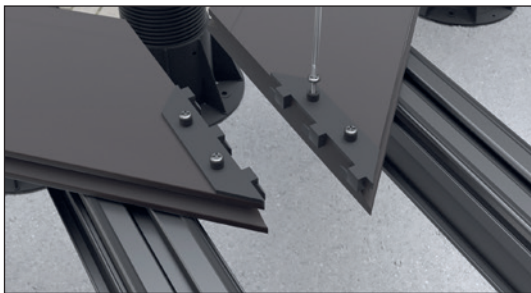


Boards may be cut to suit using wood tools

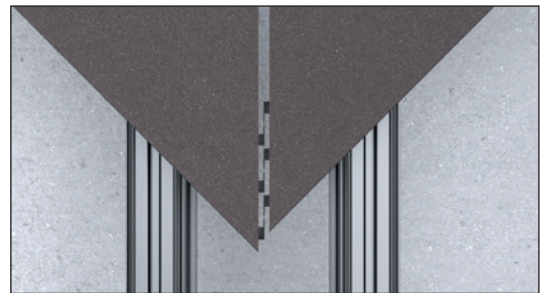


1. Screw last clip
2. Use adhesive to fix last board

## 4.8 Mitred joint installation



Align universal connector and screw the to the board.



The hooks should interlock with each other when installing the boards.

NOTE: Cannot be used when installing three or more boards

IMPORTANT In order to avoid board migration and joint misalignment all boards must be glued to the joist either side of a joint, whether they are straight or angled.



WANT MORE HELP?  
Contact our technical support team on +44 (0)20 3146 7879  
or email [technical@raaft.co](mailto:technical@raaft.co)

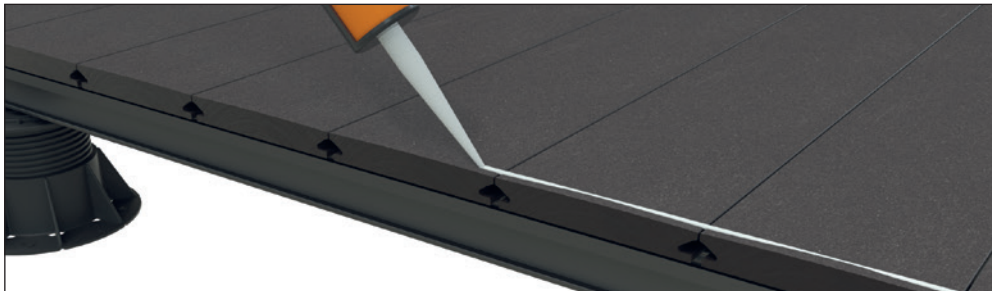
# Installation Guide

Terrafina Composite Decking - Installed using Raaft Joists on Adjustable Pedestals.  
Reference: IG-TCP-1021

## 5.0 Installing deck board accessories

### 5.1 Glue the WPC corner profile of the aluminium end profile using construction adhesive.

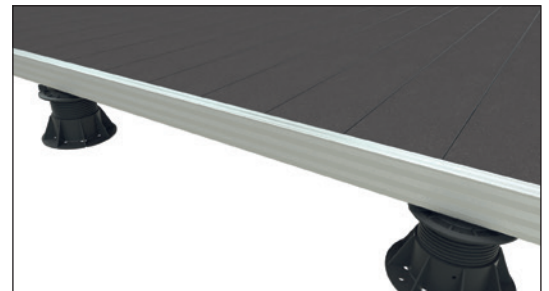
Weigh down the end profile, press on it or possibly fix it using tape, until the adhesive has set (approx. 15 min).



WPC corner profile/aluminium end profiles



WPC corner profile

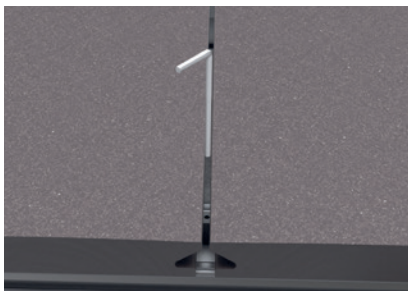


Aluminium corner profile

## 6.0 Removing a board with access clips

### 6.1 Use allen key to turn and unlock clip and allow board to be lifted

Turning the access clip through 90° using the allen key allows the boards to be lifted.  
One row of access clips should sufficient in an area that required occasional access.



WANT MORE HELP?

Contact our technical support team on +44 (0)20 3146 7879  
or email [technical@raaft.co](mailto:technical@raaft.co)

# Installation Guide

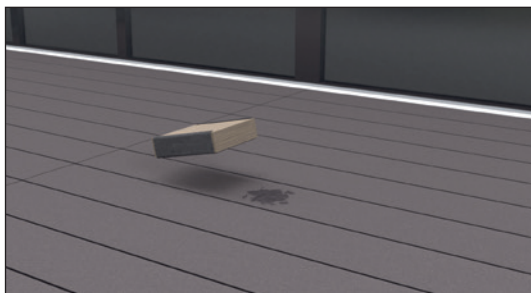
Terrafina Composite Decking - Installed using Raaft Joists on Adjustable Pedestals.  
Reference: IG-TCP-1021

## 7.0 Cleaning and care

### 7.1 Cleaning guidance



### 7.2 Removal of oil and fat with special cleaning agent (included in the cleaning set).



Removal of burn marks using a coarse sand paper (grain size of 80) in deck board direction (included in the cleaning set).



Removal of burn marks and oil & fat should be done immediately

## 8.0 Further information

### Disposal

Terrafina is completely recyclable. Waste material may be disposed of with the regular household and/or commercial waste. Larger quantities may be disposed of with bulk waste or taken directly to an appropriate waste disposal site. If in doubt, please contact your city and/or municipal administration to discuss appropriate methods of recycling.



**WANT MORE HELP?**  
Contact our technical support team on +44 (0)20 3146 7879  
or email [technical@raaft.co](mailto:technical@raaft.co)



# Installation Guide

Terrafina Composite Decking - Installed using Raaft Joists on Adjustable Pedestals.  
Reference: IG-TCP-1021

## Validity

Our installation instructions are drawn up on the basis of current knowledge and may be adapted at any time and without prior notice. Please check if you have the most currently released version or if an update is available at [www.raaft.co](http://www.raaft.co) in the Resource Centre.  
Valid July 2019.

## Technical questions?

These installation instructions are designed for standard applications.

Due to an unlimited variety of design options it is impossible to cover all possibilities

In case of specific installation variants, please also see our separate installation instructions at [www.raaft.co](http://www.raaft.co). In case of further questions or in case additional technical details are required, please contact us by email at [enquiries@raaft.co](mailto:enquiries@raaft.co) or by phone on +44 (0)20 3146 7879.

## Handling and hazards



### HEAVY SEGMENTS!

Requires two persons to lift each segment – or mechanical lifting device.



### HEAVY ITEMS!

Wear steel toe protection.



### SHARP CORNERS & EDGES!

Wear gloves



### BE SAFE!

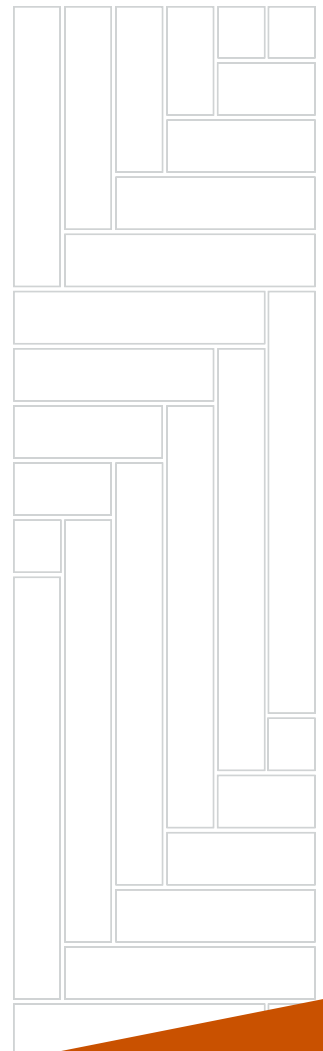
Wear high visibility clothing, hard hats, and any other PPE required on site.

## DISCLAIMER

These instructions are for guidance only and the installer is responsible to use their discretion to install the products in the best possible way for their respective application. Raaft Limited will not be held liable for product failure or poor performance as a result of poor quality installation. If any errors are found in this guide please email us at [technical@raaft.co](mailto:technical@raaft.co).

## SUPPORTING DOCUMENTS

More information can be found at [www.raaft.co](http://www.raaft.co).



117-121 St John Street, Clerkenwell, London EC1V 4JA  
t: +44 (0)20 3146 7879 e: [sales@raaft.co](mailto:sales@raaft.co)  
[raaft.co](http://raaft.co)